



NUMBER: 18-017-04 REV. A

GROUP: Vehicle Performance

DATE: June 15, 2004

This bulletin is supplied as technical information only and is not an authorization for repair. No part of this publication may be reproduced, stored in a retrieval system, or transmitted, in any form or by any means, electronic, mechanical, photocopying, recording, or otherwise, without written permission of DaimlerChrysler Corporation.

THIS BULLETIN SUPERSEDES SERVICE BULLETIN 18-017-04, DATED APRIL 20, 2004. ALL REVISIONS ARE HIGHLIGHTED WITH **ASTERISKS AND INCLUDES ADDITIONAL MODELS.**

THE SOFTWARE WILL BE AVAILABLE ON TechCONNECT ON JUNE 15, 2004 AND FOR MARKETS OUTSIDE OF THE UNITED STATES AND CANADA, THE SOFTWARE AND REPROGRAMMING INSTRUCTIONS WILL BE AVAILABLE ON ITIL/ISIS DVD AUGUST 2004.

SUBJECT:

Flash: 3.7L Driveability And OBD II Monitor Improvements

OVERVIEW:

This bulletin involves selectively erasing and reprogramming the Powertrain Control Module (PCM) with new software.

MODELS:

****2004 (AN) Dakota****
****2004 (DR) Ram Truck****
2004 (KJ) Liberty / Cherokee

NOTE: This bulletin applies to vehicles equipped with a 3.7L engine (sales code EKG) and built on or prior to the following dates for each respective model: Dakota (AN) built on or prior to April 20, 2004 (MDH 0420XX), Liberty/Cherokee (KJ) built on or prior to April 01, 2004 (MDH 0401XX), or Ram Truck (DR) built on or prior to April 13, 2004 (MDH 0413XX).

SYMPTOM/CONDITION:

This bulletin addresses one or more of the following conditions:

- 1. Driveability (All Domestic and International Markets)**
 - a. Eliminates stumble and hesitation when shifting between gears aggressively (this condition applies only to KJ with manual transmission).
- 2. OBD II Monitor Improvement (All Domestic Markets and ONLY International Markets with OBD II Monitors - Europe)**
 - a. Erroneous DTC P0116 - Engine Coolant Temperature Sensor Circuit Performance.
 - b. Erroneous DTC's related to the Misfire Monitor.

- c. Erroneous DTC's related to the **Oxygen Sensor Upstream or Downstream Monitors.**
- d. Erroneous DTC's related to the **Fuel System Upstream or Downstream Monitors.**

DIAGNOSIS:

Using a Scan Tool (DRBIII®) with TechCONNECT or the appropriate Diagnostic Procedures Manual, verify all engine systems are functioning as designed. If DTCs are present record them on the repair order and repair as necessary before proceeding further with this bulletin.

If the vehicle operator describes or experiences one or more of the above conditions perform the Repair Procedure.

PARTS REQUIRED:

Qty.	Part No.	Description
1	04275086AB	Label, Authorized Modification

SPECIAL TOOLS/EQUIPMENT REQUIRED:

NPN	Battery Charger
CH2002	General Purpose Interface Bus Cable Assembly
CH6000A	Scan Tool (DRBIII®)
CH7000A	J1962 Cable with red DRBIII® connector
	TechCONNECT PC

NOTE: An updated J1962 cable has been released. This cable has a red colored connector at the DRBIII® connection. Use this cable whenever a flash is being performed.

REPAIR PROCEDURE:

NOTE: Whenever a controller is programmed, the software in the DRBIII®; must be programmed with the latest revision level available.

NOTE: If this flash process is interrupted/aborted, the flash should be restarted and then follow the directions on the DRBIII®.

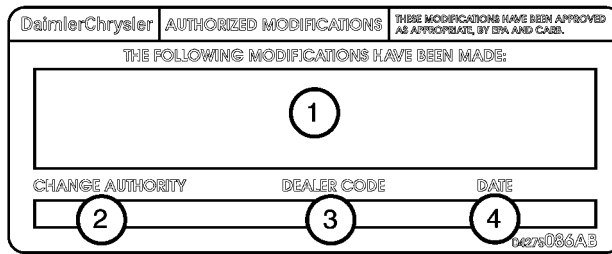
1. Before beginning the reprogramming procedure, remove any old flash reprogramming files from the DRBIII® memory. To clear the memory from the MAIN MENU power up the DRBIII® and then:
 - a. Simultaneously press the "MORE" and "YES" keys.
 - b. A screen will appear requesting a "COLD BOOT".
 - c. Follow the on screen instructions by selecting the "F4" key.
 - d. When the DRB III® reboots to the MAIN MENU, proceed to (STEP #2)
2. With the ignition switch in the "RUN" position, determine the original part number of the PCM currently in the vehicle. Using the DRBIII® select:

- a. "DRBIII® Standalone"
 - b. "1998 - 2004 Diagnostics"
 - c. "All (Except Below)"
 - d. "Engine"
 - e. "Module Display"
 - f. Record the "PCM part #" on the repair order for later reference.
3. Connect the DRBIII® to TechCONNECT. Open TechTOOLS and verify that the "DRBIII® Status: Connected" message is in the upper right corner of the TechTOOLS screen.
 4. Enter the "PCM part #" recorded in (STEP #2) in the "Parts Criteria" area and select "Show Updates". TechTOOLS will populate the appropriate calibration.
 5. Select the calibration.
 6. Select the "DRBIII" radio button which is next to the "Download/Update" button.
 7. Select the "Download/Update" button.
 8. Monitor the "Flash Download/Update Progress" window on the TechCONNECT and follow the instructions on TechCONNECT. When the flash process is complete, proceed to (STEP #9).
 9. **Disconnect the DRBIII® from TechCONNECT.**
 10. Open the hood, install a battery charger and verify battery state is above 12.5 volts.
 11. Connect the DRBIII® to the vehicle.
 12. Download the flash from the DRBIII® to the vehicle. Using the DRBIII® select:
 - a. "Vehicle Flash"
 - b. Follow the directions on the DRBIII® screen. When the flash process is complete, proceed to (STEP #13).

NOTE: Due to the PCM programming procedure, a DTC may be set in other modules (TCM, PCM, BCM, MIC, SKIM, etc.) within the vehicle, if so equipped. Some DTC's may cause the MIL to illuminate. Check all modules using "Module Scan", record the DTC's, and erase these DTC's prior to returning the vehicle to the customer. Erase any DTC's in the PCM only after all other modules have had their DTC's erased.

NOTE: The following step is required by law.

13. Type the necessary information on the "Authorized Modification Label" p/n 04275086AB and attach near the VECI label (Figure 1).



80f34528

FIGURE 1 - AUTHORIZED MODIFICATION LABEL

1-	POWERTRAIN CONTROL MODULE P/N (INSERT P/N) USED
2-	CHANGE AUTHORITY: TSB XX-XXX-XX
3-	DEALER CODE: XXXXX
4-	DATE: XX-XX-XX

POLICY:

Reimbursable within the provisions of the warranty.

TIME ALLOWANCE:

Labor Operation No:	Description	Amount
08-19-35-97	Reprogram Powertrain Control Module	0.8 Hrs.

FAILURE CODE:

FM	Flash Module
----	--------------